

- Opal diffuser - direct distribution

White steel frame for surface-mounting on ceiling and white powder-coated aluminium luminaire housing. Housing colour traffic white RAL 9016; External LED driver. Flexible 40cm long connecting cable wired to the luminaire via a plug system ready for operation. lowea luminaire and mounting frame. Further operating data can be found in the operating instructions.

CHARACTERISTICS

Order number	60113034110+60110005100
Commodity code	94051190
Certification mark	IP 20, Protection class II, F, Indoor, CE
State funding programs	BEG - Federal funding for efficient buildings (valid only for Germany)

ELECTRICAL ENGINEERING

Controller	Electronic multi-lumen driver, 4-steps (1 pcs.)
System output	39W-30W
Mains voltage	230V/50Hz
Energy efficiency class/light source	C

LIGHTING TECHNOLOGY

Placement	LED, Colour rendering/Light colour CRI ≥ 80 / 3000K
Nominal luminous flux/switching steps	4800lm/39W, 4400lm/36W, 4200lm/34W, 3800lm/30W (Standard setting 4200lm)
LED service life	50000h L80/B10
Luminaire luminous efficiency	128lm/W-122lm/W
UGR lat./long.	21.9 / 21.9 (39W)

MECHANICS

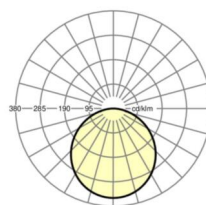
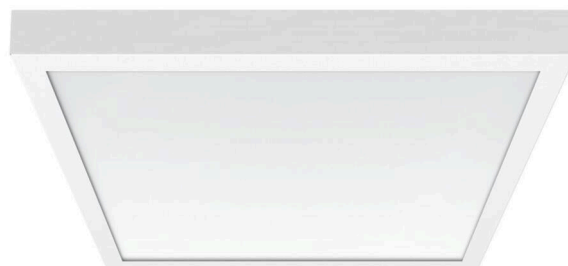
Housing colour	traffic white RAL 9016
Dimensions (LxWxH/DxH)	627mm x 627mm x 62mm
Depth	62mm
Weight (net)	6.49kg
Type of installation	Ceiling-mounted single installation

Dimensions

L	627 mm	Length
B	627 mm	Width
H	62 mm	Height
T	62 mm	Depth
KL	144 mm	Length luminaire head or box for ballasts
KB	42 mm	Width luminaire head or box for ballasts
KH	29 mm	Height luminaire head or box for ballasts

DEEP-LINK

<https://www.regiolum.de/en/article/60113034110+60110005100>



Reference	LED 4800lm/39W 830
ηLB	100 %
Φ ↓/↑	100 % / 0 %
UGR lat./long.	21.9 / 21.9

